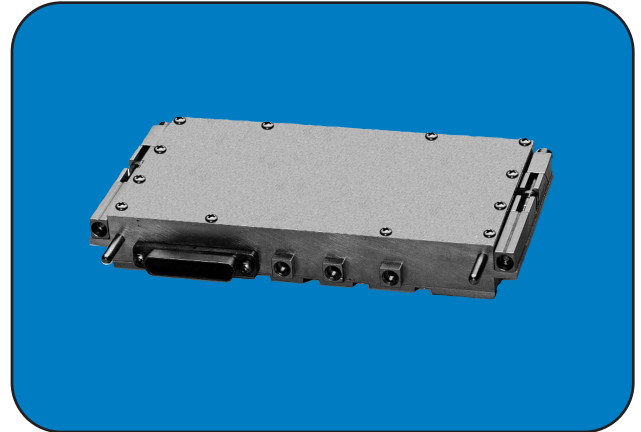


Synthesizers
Direct Synthesizer, 3.25 - 4.75 GHz
Model: SYN094



Features:

- Fast Switching: < 1 μ s
- Low Spurious: - 70 dBc
- Small Size: 9 cubic inches
- Low DC Power: 4.35 watts



Electrical Specifications

Frequency Range:	3.25 - 4.75 GHz
Step Size:	500 MHz
Switching Speed:	1 μ s, max
Output Power:	+ 15 dBm \pm 2 dB (dual output), nominal
SSB Phase Noise (dBc/Hz, typical): ^{Note 1}	
Offset	
1 kHz	- 105
10 kHz	- 108
100 kHz	- 113
1 MHz	- 122
Reference Input:	125 MHz @ - 5 dBm, nominal
Spurious:	- 70 dBc, max
Harmonics:	- 15 dBc, max
Tuning Control:	Custom parallel TTL
BITE Scheme:	RF Power bit
DC Power:	+ 15 V @ 240 mA, max + 5 V @ 115 mA, max - 5 V @ 35 mA, max.
Power Consumption:	4.35 W, max

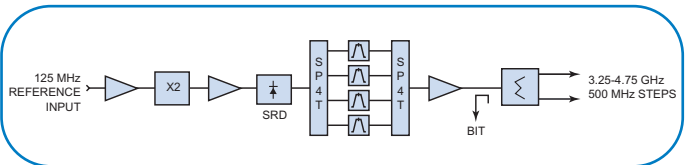
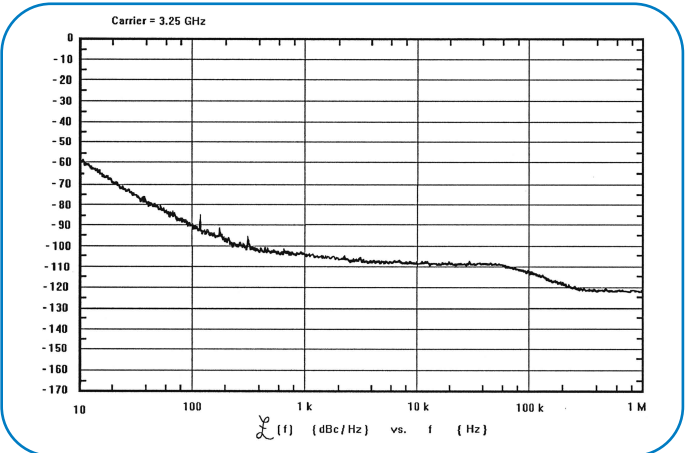
Note 1: Phase noise listed is relative to the phase noise of the input reference oscillator. See plot of typical SSB levels.

Environmental Specifications

Operating Temperature: - 55 to + 95 $^{\circ}$ C, baseplate
Environment: Airborne

Mechanical Specifications

Size (nominal): 4.5 x 2.5 x 0.8 inches
114 x 64 x 20 mm
Weight: 10 oz (283.5 g), max
RF Connectors: GPO
DC Connector: MDM 15 pin



Specifications subject to change without notice.