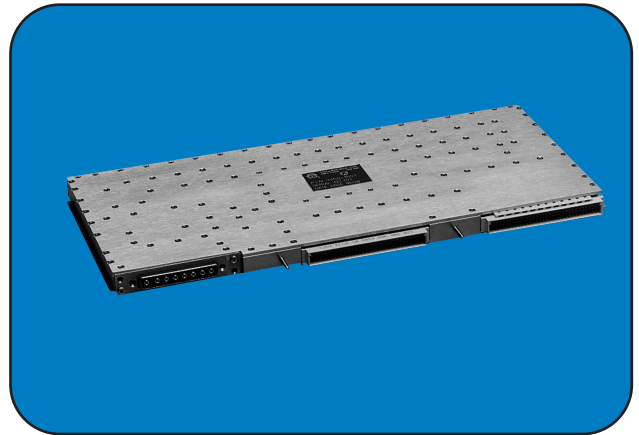


Features:

- Combines: MMIC Amplifiers and Transistor Multipliers
- Dual IF Outputs: 70 MHz and 970 MHz
- L.O. Frequency Generation: Five Tones
- Over 40 dB AGC Control
- Built-In-Test Functions
- Field Programmable
- VME Bus Interface
- Low Noise Design



Electrical Specifications

Reference Input

Frequency:	5 MHz
Power Level:	+ 2.5 dBm \pm 2 dB

Diplexed Inputs

Frequency:	RF	6.1 - 6.5 GHz
	LO	5.1 GHz
Power Level:	(RF)	- 40 dBm \pm 25 dB

Calibration Mode Input

Frequency:	6.4 - 7.4 GHz
Power Level:	+ 8.5 dBm \pm 2.5 dB

First IF Output

Frequency:	70 \pm 2 MHz
Power Level:	Note 1 + 20 dBm, minimum
IF Gain:	22 dB \pm 1.5 dB
Harmonics:	- 20 dBc, maximum
Spurious:	- 50 dBc (in-band)

Second IF Output

Frequency:	Note 2 (WB)	970 \pm 200 MHz
	(NB)	970 \pm 3.5 MHz
Power Level:	Note 1	+ 20 dBm, minimum
IF Gain:	Note 3	42 \pm 2 dB
IF Gain Control:		0 to - 62 dB (2 dB steps)
Harmonics:		- 20 dBc, maximum
Spurious:		- 50 dBc (in-band)

Fixed LO Outputs

Frequencies:	5 MHz	900 MHz
Power Level:	+ 10 dBm \pm 2 dB	
Harmonics:	- 35 dBc	- 60 dBc
Spurious:	- 80 dBc	- 60 dBc

ECL Outputs Freq.:	40 MHz	100 MHz
--------------------	--------	---------

General

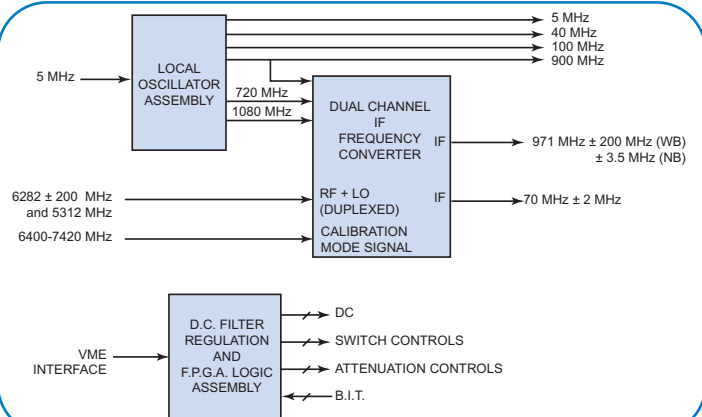
Impedance:	50 ohms
Load VSWR:	1.5:1
Tuning Control:	VME Bus Interface
BITE Scheme:	Fault Status ("1" = Fault)
DC Power (nominal):	+ 12 V \pm 5 % @ 1550 A + 5 V \pm 5 % @ 250 mA - 12 V \pm 5 % @ 235 mA
Power Consumption:	22.7 W, nominal

Environmental Specifications

Operating Temperature: 0 to + 65 °C, baseplate

Mechanical Specifications

Size:	Single 9U x 160 mm VME card
Weight:	5 lbs (2.3 kg), nominal



Note 1: Minimum output power @ 1 dB compression

Note 2: The 970 MHz IF signal has two selectable bandwidths: wideband (WB) and narrowband (NB).

Note 3: Referenced to 0 dB attenuation

Specifications subject to change without notice.