

Ferrite Microwave Products

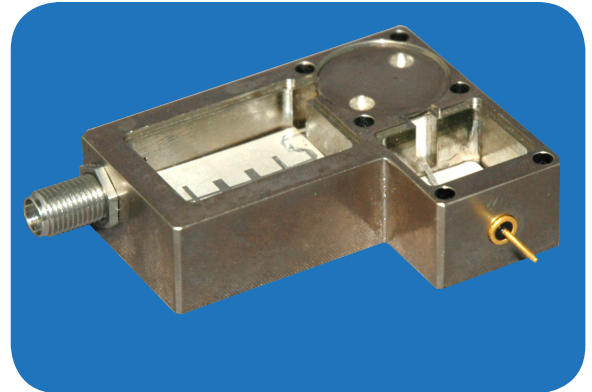
Isolator-Filter-Detector, C-Band

Model: FMP147



Features

- Reverse Power Detection With DC Output
- Harmonic Rejection Filter
- 120 Watt CW Power Handling Capability
- Rugged Construction for Airborne Applications
- Stainless Steel Housing; High Magnetic Shielding
- Brazed on Copper Heat Spreader For Termination



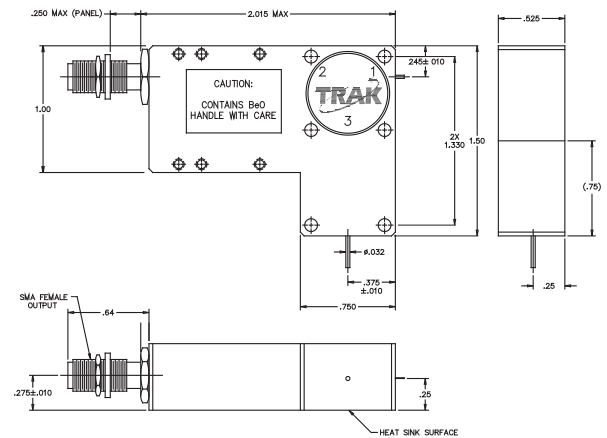
Electrical

Operating Frequency:	C-Band
Insertion Loss:	1.0 dB Max
2 nd Harmonic Rejection:	43 dB Min
Isolation:	20 dB Min
VSWR:	1.5:1 Max
Reverse Power Detector:	3V @ 90 W
Reverse Power Handling:	120 Watt CW

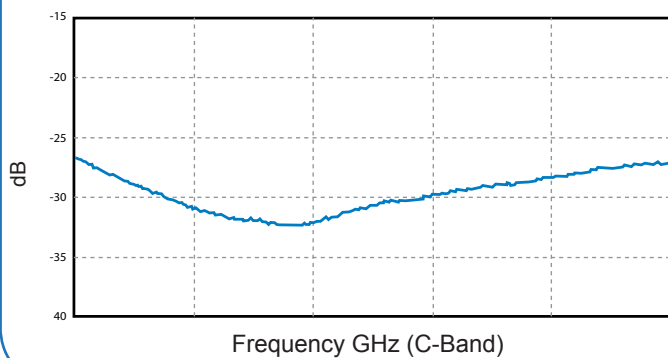
Environmental

Operating:	-40°C to +80°C
Storage:	-66°C to +95°C
Size:	2.0" X 1.50" X 0.525"
Mass:	110 Grams

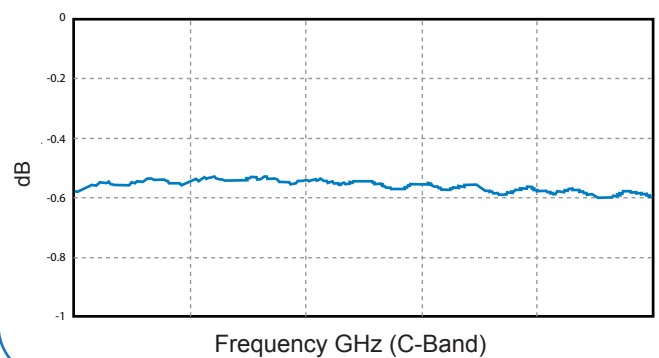
Drawing



Typical Return Loss



Typical Insertion Loss



Specifications subject to change without notice.

TRAK Microwave Corporation

E-mail: sales@trak.com ♦ www.trak.com

Ph: 813-901-7200 ♦ Fax: 813-901-7491

4726 Eisenhower Boulevard ♦ Tampa, FL 33634-6391 USA

© TRAK Microwave Corp.

smiths

bringing technology to life